



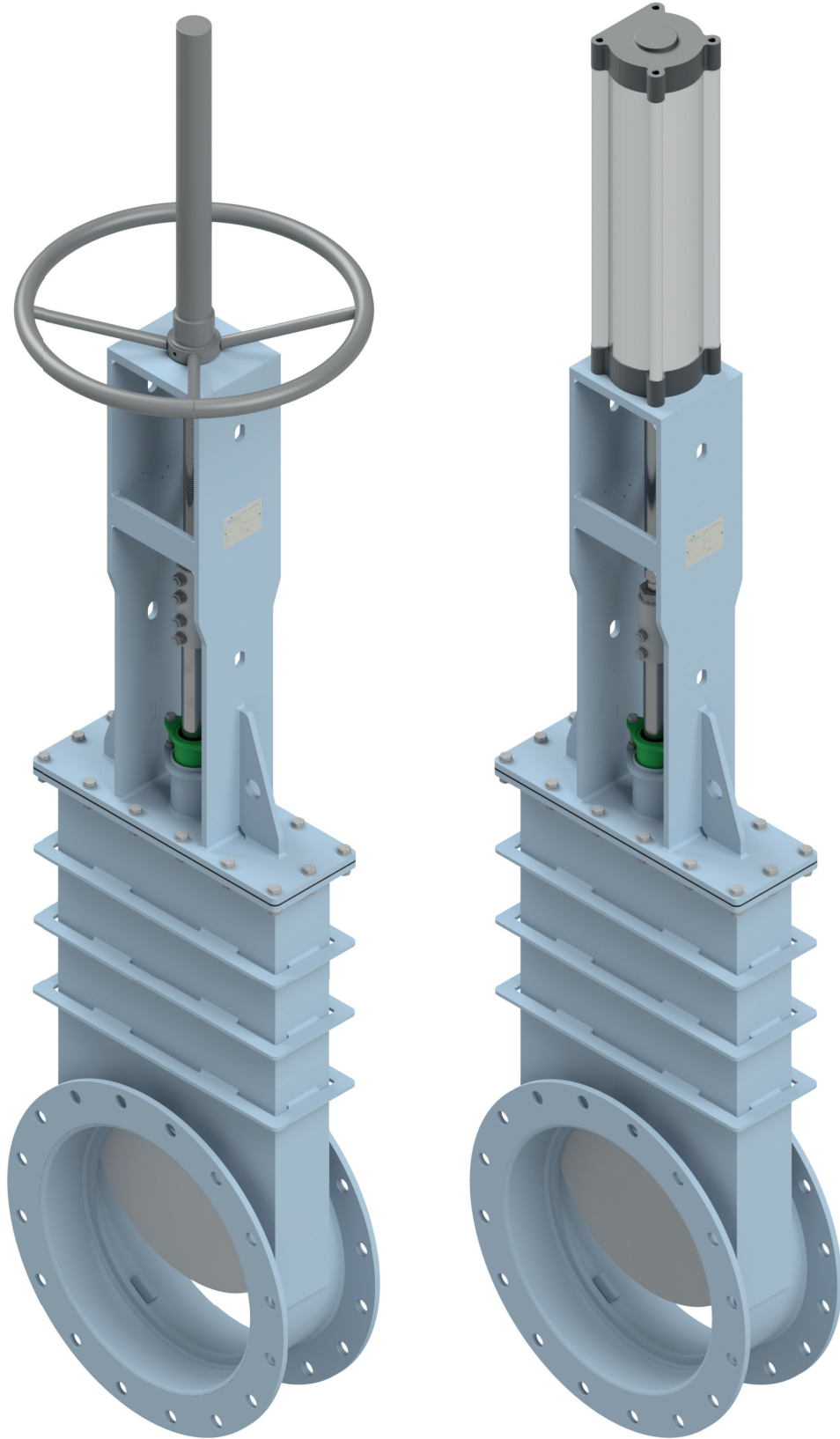
AMM 761

SERIES 7



 **Ammtech**
industrial valves

AMM 761



VALVOLA A GHIGLIOTTINA (SEZIONE CIRCOLARE, QUADRATA, RETTANGOLARE)

CAMPI DI APPLICAZIONE

- Fluidi: Aria, Gas e Fumi (anche polverosi)
- Termovalorizzatori ed Impianti d'Incenerimento
- Biomassa e Biogas
- Industria siderurgica
- Vetriere
- Cementifici
- Impianti di filtrazione e abbattimento polveri
- Centrali elettriche
- Industria Chimica e Petrolchimica
- Impianti di Ventilazione e Condizionamento
- Impianti di Ossidazione termica e Rigenerativa

CARATTERISTICHE GENERALI

- Servizio ON-OFF
- Diametro da DN 100 a DN 1500 (DN inferiori a 100 e superiori a 1500 su richiesta)
- Connessioni: FLANGIATA PN6, PN10, ANSI 150, a saldare o a disegno
- Classe di tenuta: I, II, III e IV secondo FCI 70-2
- Manuali e motorizzate con attuazione pneumatica o elettrica

CONDIZIONI D'ESERCIZIO

Massima temperatura d'esercizio: 900°C

Pressione massima d'esercizio: 3 barg

La pressione massima d'esercizio varia con il diametro e la temperatura

MATERIALI

- Carbon Steel
- S355JOWP (Corten A)
- AISI 304
- AISI 316
- Altri su richiesta

STANDARD APPLICABILI

- Secondo EN 12516-1, EN 736-1, EN 736-2, EN 736-3, EN 1349, EN 593, -ASMEB16.34
- Materiali secondo EN 1503-1, EN 1503-2
- Connessioni secondo EN 1092-1, ASME B16.5
- Marcatura secondo EN 19
- Certificazione Processi di saldatura UNI EN 287-1

DIRETTIVE APPLICABILI

- Dichiarazione di conformità alla direttiva macchine 2006/42/CE
- Dichiarazione di conformità alla direttiva PED 2014/68/UE
- Dichiarazione di conformità alla direttiva ATEX 2014/34/UE
- **Gruppo II Categoria 2 per Zona 1-2 Gas e 21-22 Polveri (II 2GD)**

VERNICIATURA

- In accordo ns procedura PSP00
- Carbon Steel: RAL 7031
- S355JOWP (Corten A): RAL 9005

TEST

- In accordo a AMMtech Quality Control Plan QCP02
- In accordo a FCI70-2, EN 12266, API 598

ATTUAZIONE

- Attuatori pneumatici e elettrici secondo EN 15714-1, EN 15714-2, EN 15714-3
- Connessioni e Attuatori secondo EN ISO 5210, EN ISO 5211

GUILLOTINE DAMPER (SLIDE GATE , CIRCULAR, SQUARE, RECTANGULAR SECTION)

APPLICATIONS

- Fluids: Air, Gas and Dusty Fumes
- CHP and Incineration Plants
- Biomass, Biogas
- Steel Industry and Furnaces
- Glass Industry
- Cement Plants
- Air Pollution and Filtration
- Power Plants
- Chemical Industry
- Oil and Gas
- HVAC
- Thermal Oxidizers

GENERAL CHARACTERISTICS

- ON/OFF Service
- Diameter Range from DN 100 to DN 1500 (DN below 100 or above 1500 upon request)
- End Connections: FLANGED PN6, PN10, ANSI 150, Butt Weld or according to Customer Drawing
- Tightness Class I, II, III and IV according to FCI 70-2
- Operated by Handlever, Pneumatic or Electric Actuators

WORKING CONDITIONS

Maximum Working Temperature up to 900°C

Maximum Working Pressure up to 3 barg

Maximum Working pressure varies with diameter and temperature

MATERIALS

- Carbon Steel
- S355JOWP (Corten A)
- 304 SS
- 316 SS
- Others upon request

APPLICABLE STANDARDS

- Designed according to EN 12516-1, EN 736-1, EN 736-2, EN 736-3, EN 1349, EN 593, ASMEB16.34
- Materials according to EN 1503-1, EN 1503-2
- End Connections as per EN 1092-1, ASME B16.5
- Marking according to EN 19
- Certified Welding Procedures according to UNI EN 287-1

APPLICABLE DIRECTIVES

- Declaration of Conformity in Compliance with Machinery Directive 2006/42/CE
- Declaration of Conformity in Compliance with European Directive PED 2014/68/UE
- Declaration of Conformity in Compliance with European Directive ATEX 2014/34/UE
- **Group II Category 2 for Zone 1-2 Gas and 21-22 Dust (II 2 GD)**

COATING

- According to our cycle PSP00
- Carbon Steel: RAL 7031
- S355JOWP (Corten A): RAL 9005

TEST

- According to AMMtech Quality Control Plan QCP02
- According to FCI70-2, EN 12266, API 598

DRIVING SYSTEMS

- Pneumatic and Electric Actuators according to EN 15714-1, EN 15714-2, EN 15714-3
- Actuators End Connections as per EN ISO 5210, EN ISO 5211

AMM 761

FLOW COEFFICIENT

FLOW COEFFICIENT KV

| DN | 100° | 75° | 50° | 40° | 30° | 20° | 10° |
|------|--------|--------|-------|-------|-------|-------|-------|
| 100 | 1595 | 631 | 250 | 172 | 119 | 82 | 57 |
| 125 | 2271 | 972 | 414 | 295 | 209 | 152 | 107 |
| 150 | 4686 | 1685 | 607 | 402 | 267 | 176 | 119 |
| 200 | 6359 | 2608 | 1070 | 750 | 525 | 369 | 258 |
| 250 | 12632 | 4613 | 1685 | 1123 | 750 | 504 | 336 |
| 300 | 22382 | 7503 | 2513 | 1624 | 1050 | 677 | 439 |
| 350 | 30463 | 10209 | 3424 | 2210 | 1427 | 923 | 595 |
| 400 | 39786 | 13333 | 4469 | 2886 | 1866 | 1205 | 779 |
| 450 | 50356 | 16876 | 5658 | 3653 | 2358 | 1525 | 984 |
| 500 | 62168 | 20836 | 6982 | 4510 | 2911 | 1882 | 1214 |
| 600 | 89524 | 30004 | 10057 | 6494 | 4194 | 2710 | 1751 |
| 700 | 121852 | 40840 | 13686 | 8840 | 5707 | 3686 | 2382 |
| 800 | 159154 | 53341 | 17876 | 11546 | 7458 | 4813 | 3108 |
| 900 | 201429 | 67510 | 22624 | 14612 | 9439 | 6092 | 3934 |
| 1000 | 248678 | 83346 | 27932 | 18040 | 11653 | 7521 | 4856 |
| 1100 | 300618 | 100806 | 33746 | 21769 | 14088 | 9125 | 5856 |
| 1200 | 357474 | 119907 | 40154 | 25907 | 16770 | 10863 | 6973 |
| 1300 | 419213 | 140656 | 47118 | 30406 | 19686 | 12754 | 8188 |
| 1400 | 485833 | 163053 | 54639 | 35264 | 22836 | 14796 | 9501 |
| 1500 | 557335 | 187098 | 62715 | 40482 | 26220 | 16990 | 10912 |

$$K_v = Q_n / 519 * [(pG * T_1) / (\Delta p * p_2)]^{0,5} \quad (C_v = K_v / 0,8565)$$

where:

Q_n [m³/h]: Gas flowrate, related to 0 °C and 1013 mbar

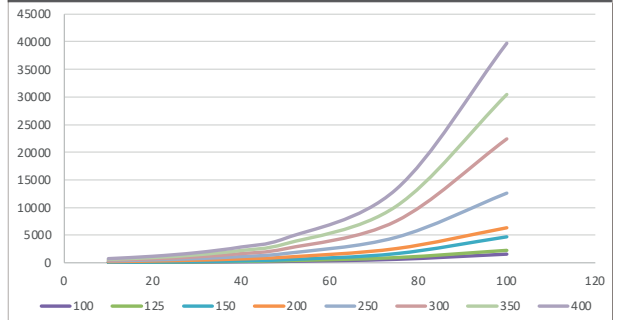
ρ_g [kg/m³]: Gas densing at 0 °C and 1013 mbar

T_1 [K]: absolute temperature at upstream side of the valve

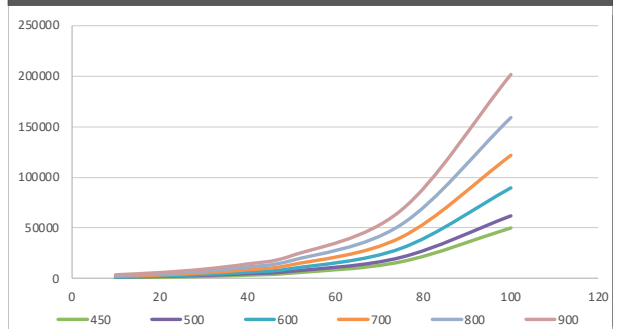
Δp [bar]: valve pressure drop

p_2 [bar]: absolute pressure at downstream side of the valve

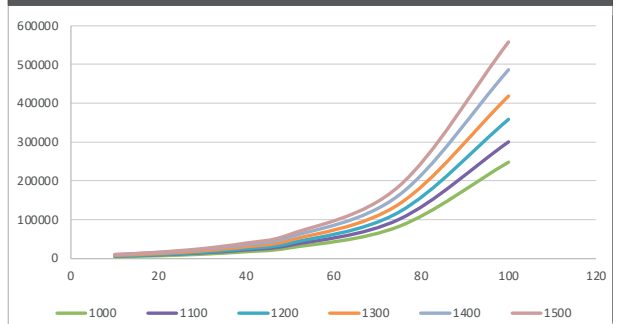
FLOW COEFFICIENT KV DN 100 - DN 400



FLOW COEFFICIENT KV DN 450 - DN 900



FLOW COEFFICIENT KV DN 1000 - DN 1500



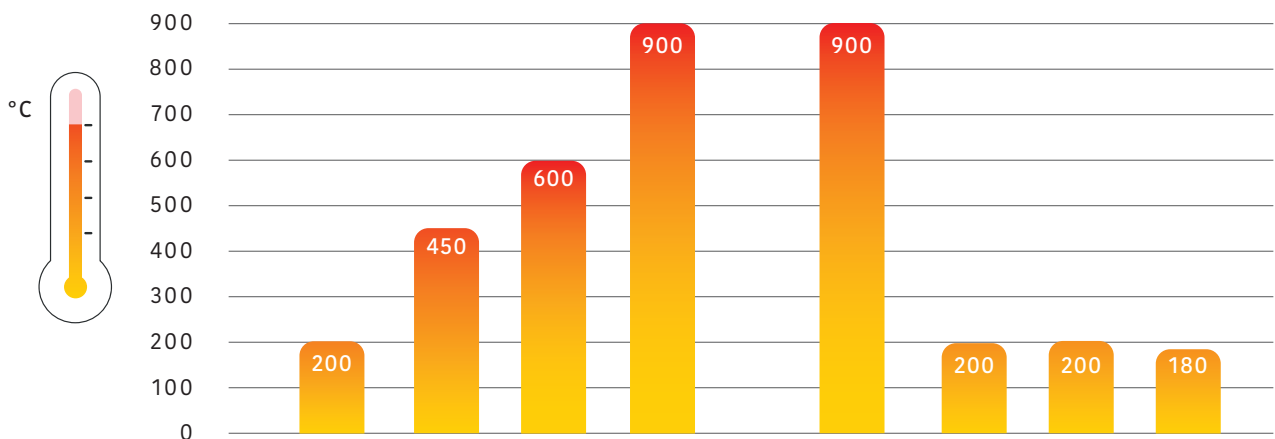
VALVE MATERIAL

BODY AND DISC MATERIAL

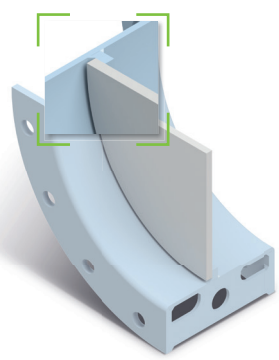
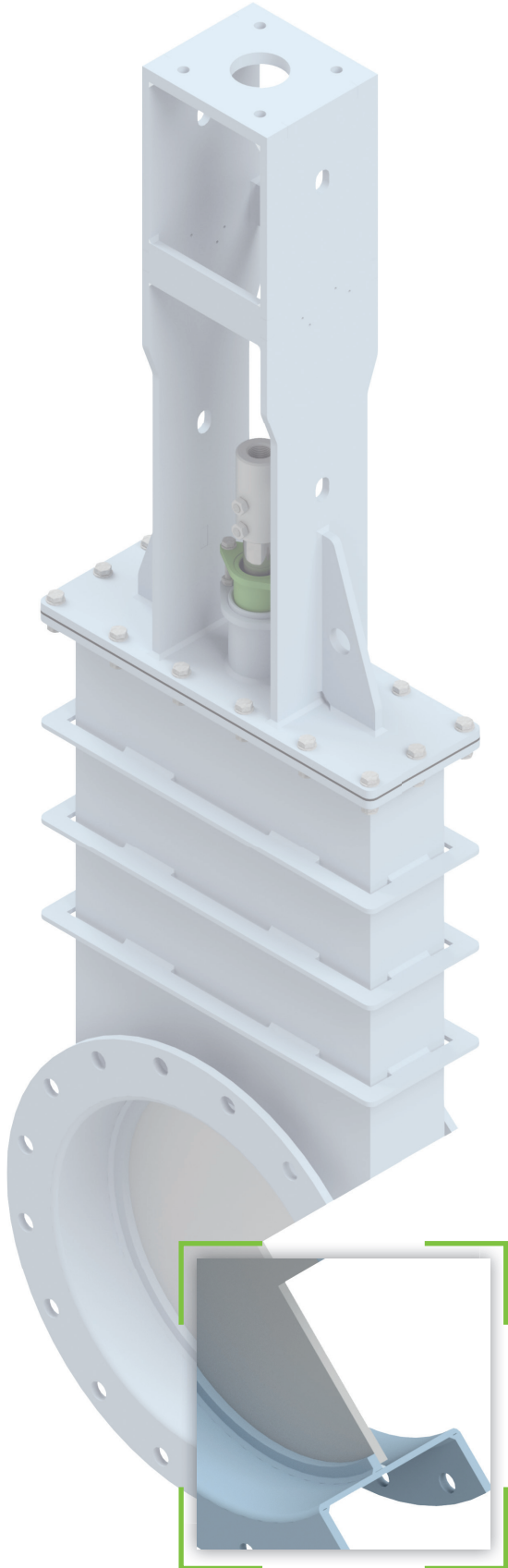
| | | | |
|--------------|----------|-------|-------|
| Carbon Steel | S355JOWP | SS316 | SS310 |
|--------------|----------|-------|-------|

SEAT AND PACKAGING MATERIAL

| | | | |
|------------|----------|------|-----------|
| Texilgraph | Silicone | PTFE | FKM Viton |
|------------|----------|------|-----------|

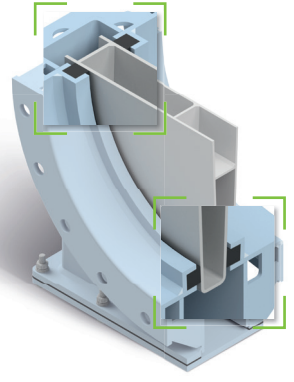


* Verificare compatibilità chimica dei materiali con fluido di processo.
 Chemical suitability of construction material to be verified according to process fluid.



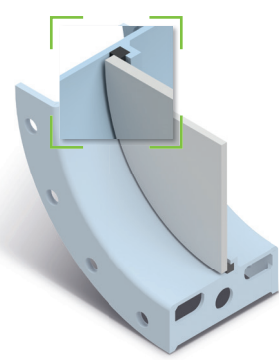
| COD.0 Standard | | |
|---|-------|--------------------|
| Tenuta Met / Met Metal to metal seat | | |
| DN | CLASS | VALUE (FCI 70-2) |
| from 100 to 200 | I | Relative tightness |
| from 250 to 1500 | II | < 0,5%Kvs |
| - | - | - |

BIDIRECTIONAL

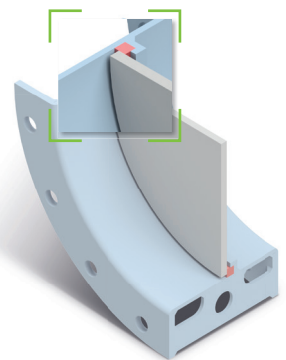


| COD.1 | |
|---|-----------|
| Tenuta perfetta con sbarramento aria Perfect Tightness with Seal air | |
| DN | VALUE |
| from 200 to 1500 | 0 leakage |

| COD.5 | | |
|--|--------|------------|
| Tenuta potenziata con treccia Soft Sealing with Braid | | |
| DN | CLASS | VALUE |
| from 200 to 400 | III | < 0,1%Kvs |
| from 450 to 1500 | III/IV | < 0,05%Kvs |



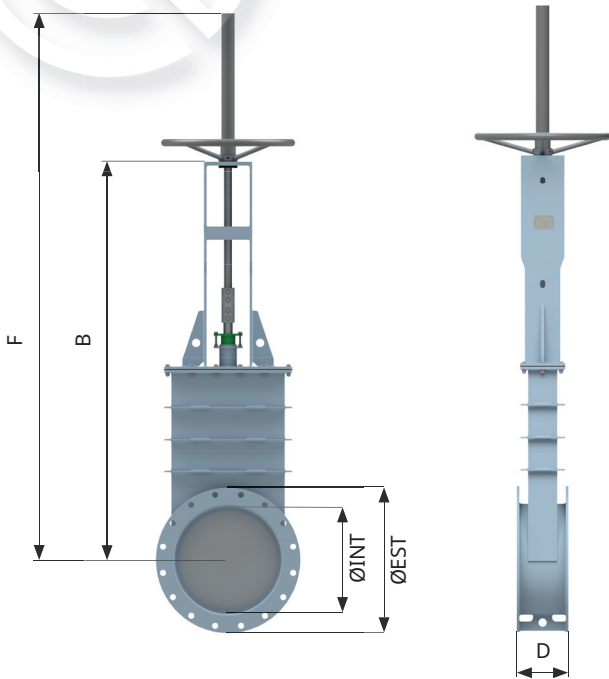
| COD.5 | | |
|--|----------|------------|
| Tenuta potenziata con treccia Soft Sealing with Braid | | |
| DN | CLASS | VALUE |
| from 100 to 200 | II | < 0,5%Kvs |
| from 250 to 1000 | III | < 0,1%Kvs |
| from 1100 to 1500 | III / IV | < 0,05%Kvs |



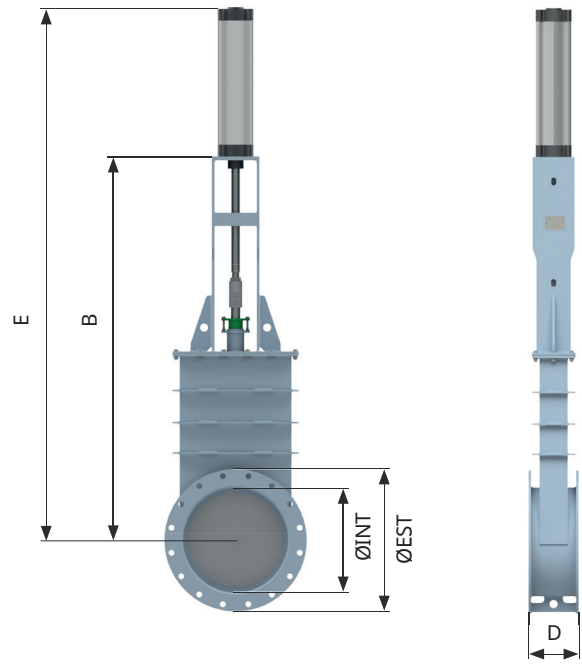
| COD.7 | | |
|--|----------|------------|
| Tenuta potenziata con Elastometro Soft Sealing with Elastomer | | |
| DN | CLASS | VALUE |
| from 100 to 200 | II | < 0,5%Kvs |
| from 250 to 1000 | III | < 0,1%Kvs |
| from 1100 to 1500 | III / IV | < 0,05%Kvs |

SEAT STYLES

AMM 761



MANUAL



PNEUMATIC

* Diametri inferiori a DN 150 o superiori a DN 1500 su richiesta
 DN below 150 or above 1500 available upon request

* Coppie senza fattore di sicurezza (per dimensionamento maggiorare del 40%).
 Torque without safety factor (for sizing consider additional 40%)

| DN | MAX PS (barg) | ØINT | ØOUTSIDE FLANGE | | Ø-STEM | D | B | E | F | REQUIRED FORCE (N) | Ø CYLINDER | PISTON FORCE MAX 5 BAR (N) | TORQUE (Nm) | POWER SCREW DIMENSION | OPERATING TURNS |
|------|---------------|------|-----------------|-------------|--------|-----|------|------|------|--------------------|------------|----------------------------|-------------|-----------------------|-----------------|
| | | | FLANGE PN6 | FLANGE PN10 | | | | | | | | | | | |
| 100 | 1 | 108 | 210 | 220 | 14 | 140 | 600 | 840 | 800 | 540 | 80 | 2260 | 10 | TR 25X5 | 20 |
| 125 | 1 | 132 | 240 | 250 | 14 | 140 | 700 | 960 | 925 | 845 | 80 | 2260 | 10 | TR 25X5 | 25 |
| 150 | 1 | 160 | 265 | 285 | 20 | 140 | 750 | 1040 | 1000 | 1215 | 80 | 2260 | 10 | TR 25X5 | 30 |
| 200 | 0,5 | 211 | 320 | 340 | 20 | 140 | 900 | 1240 | 1200 | 1110 | 80 | 2260 | 10 | TR 25X5 | 40 |
| 250 | 0,5 | 265 | 375 | 395 | 20 | 190 | 1000 | 1400 | 1350 | 1730 | 80 | 2260 | 10 | TR 25X5 | 50 |
| 300 | 0,5 | 316 | 440 | 445 | 20 | 190 | 1160 | 1640 | 1560 | 2480 | 125 | 5520 | 15 | TR 25X5 | 60 |
| 350 | 0,5 | 350 | 490 | 505 | 20 | 190 | 1260 | 1780 | 1710 | 3395 | 125 | 5520 | 15 | TR 25X5 | 70 |
| 400 | 0,5 | 400 | 540 | 565 | 35 | 190 | 1460 | 2030 | 1960 | 4440 | 125 | 5520 | 30 | TR 36X6 | 67 |
| 450 | 0,5 | 450 | 595 | 615 | 35 | 190 | 1600 | 2220 | 2150 | 5665 | 125 | 5520 | 40 | TR 36X6 | 75 |
| 500 | 0,2 | 500 | 645 | 670 | 35 | 190 | 1760 | 2430 | 2360 | 2915 | 125 | 5520 | 20 | TR 36X6 | 83 |
| 600 | 0,2 | 600 | 755 | 780 | 35 | 190 | 2000 | 2770 | 2700 | 4175 | 125 | 5520 | 30 | TR 36X6 | 100 |
| 700 | 0,2 | 700 | 860 | 895 | 35 | 190 | 2300 | 3190 | 3100 | 5685 | 160 | 9050 | 40 | TR 36X6 | 117 |
| 800 | 0,2 | 800 | 975 | 1015 | 35 | 190 | 2490 | 3480 | 3390 | 7400 | 160 | 9050 | 50 | TR 36X6 | 133 |
| 900 | 0,1 | 900 | 1075 | 1115 | 35 | 240 | 2490 | 3580 | 3490 | 5025 | 160 | 9050 | 40 | TR 36X6 | 150 |
| 1000 | 0,1 | 1000 | 1175 | 1230 | 50 | 240 | 3000 | 4190 | 4150 | 6295 | 160 | 9050 | 60 | TR 50X8 | 125 |
| 1100 | 0,1 | 1100 | 1290 | 1340 | 50 | 240 | 3350 | 4640 | 4600 | 7585 | 200 | 14100 | 70 | TR 50X8 | 138 |
| 1200 | 0,1 | 1200 | 1405 | 1445 | 50 | 240 | 3450 | 4840 | 4800 | 9230 | 200 | 14100 | 90 | TR 50X8 | 150 |
| 1300 | 0,1 | 1300 | 1515 | 1560 | 50 | 300 | 3900 | 5390 | 5350 | 10820 | 200 | 14100 | 100 | TR 50X8 | 163 |
| 1400 | 0,1 | 1400 | 1630 | 1675 | 50 | 300 | 4200 | 5810 | 5750 | 12515 | 250 | 22100 | 120 | TR 50X8 | 175 |
| 1500 | 0,1 | 1500 | 1730 | 1795 | 50 | 300 | 4500 | 6210 | 6150 | 14355 | 250 | 22100 | 130 | TR 50X8 | 188 |

AMMtech si riserva il diritto di apportare modifiche ai propri prodotti in qualunque momento / AMMtech reserves the right to make changes to its products at any time.

Push Packing
- 304SS

Packing Brad
- Graphite
- PTFE

Drive Support
- Carbon Steel
- S355JOWP
- 304SS
- 316SS
- 310SS

Stem Protective Tube
- Carbon Steel

Handwheel
- Carbon Steel
- 304SS

Stem Nut
- Bronze

Friction washer
- Brass

Trapezoidal Threaded Bar
- 304SS

Junction Bushing
- 316SS
- 304SS

Shaft
- 316SS

Gasket
- BA-U
- NBR
- Graphite

Nuts and Bolts
- 304SS

Blade
- S355JOWP
- 304SS
- 316SS
- 310SS

Body
- Carbon Steel
- S355JOWP
- 304SS
- 316SS
- 310SS

Push Packing
- 304SS

Packing Brad
- Graphite
- PTFE

Double Acting Pneumatic Cylinder

Drive Support
- Carbon Steel
- S355JOWP
- 304SS
- 316SS
- 310SS

Junction Bushing
- 316SS
- 304SS

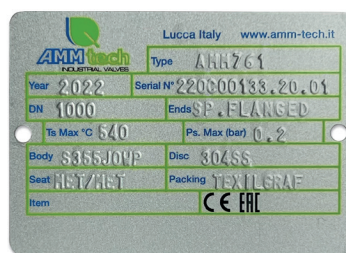
Shaft
- 316SS

Gasket
- BA-U
- NBR
- Graphite

Nuts and Bolts
- 304SS

Blade
- S355JOWP
- 304SS
- 316SS
- 310SS

Body
- Carbon Steel
- S355JOWP
- 304SS
- 316SS
- 310SS



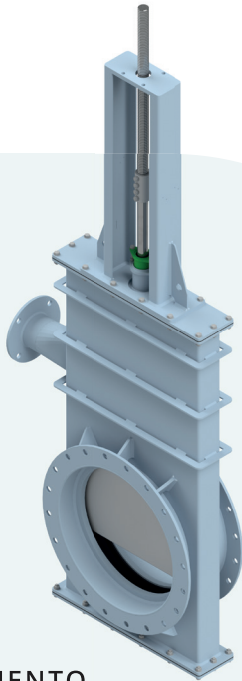
Targhetta / Name plate

SPECIAL SOLUTIONS

AMM 761

SPECIAL SOLUTIONS

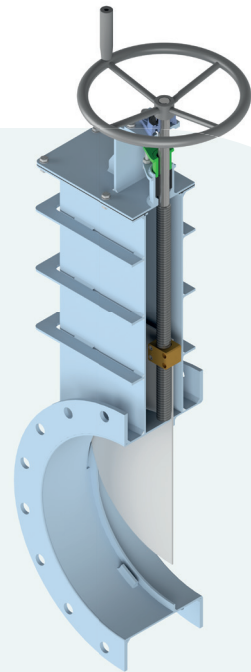
AMM761T



ARIA DI SBARRAMENTO

SEAL AIR SYSTEM

AMM761NR



ASTA NON SALIENTE

NON RISING STEM

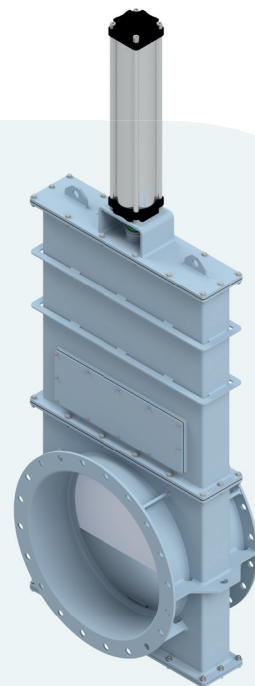
AMM761QR



SCARTAMENTO RIDOTTO

REDUCED FACE TO FACE DIMENSION

AMM761RH



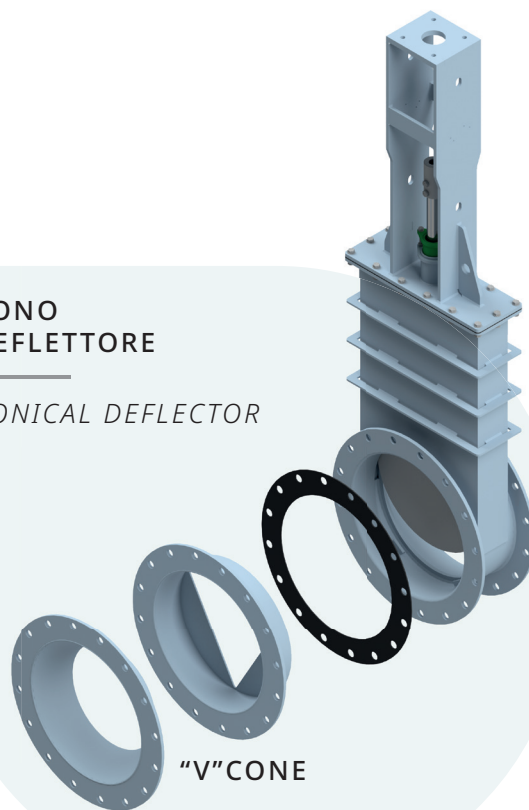
ALTEZZA RIDOTTA

REDUCED HEIGHT



**CONO
DEFLETTORE**

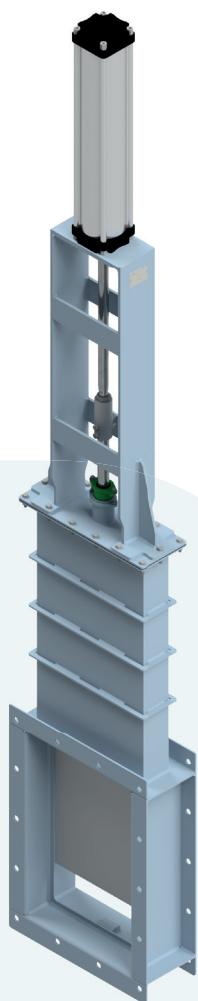
CONICAL DEFLECTOR



"V" CONE

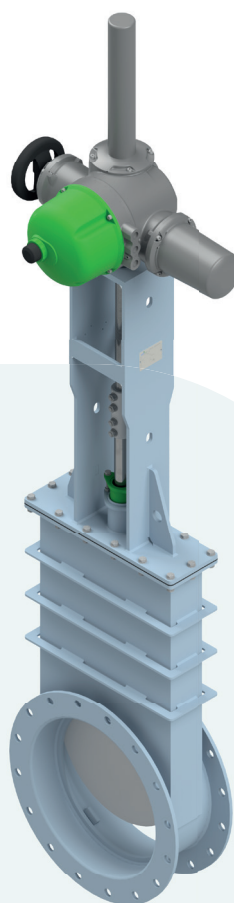
"C" CONE

AMM761Q



RETTANGOLARE

RECTANGULAR



**ATTUATORE
ELETTRICO**

ELECTRIC ACTUATOR

SPECIAL SOLUTIONS