

## Complete solutions for Desuperheating

### Wide variety of applications

We can offer solutions to most steam desuperheating applications thanks to our own broad product portfolio and us representing Emerson. We offer desuperheaters in different versions for pipes between 1.5" to 48" where the steam temperature can be controlled down to 6 ° C above saturation.

Askalon has been working to improve process and power industry applications since 1973 and has accumulated a solid experience over the years. Today we are about 90 employees with expertise in control valves, valve diagnostics and valve service.



### Efficient Desuperheating

To design an efficient desuperheating of steam requires good distribution of the spraywater, high relative velocity to the steam, and knowledge of how the geometry of the pipe effects the steam flow.

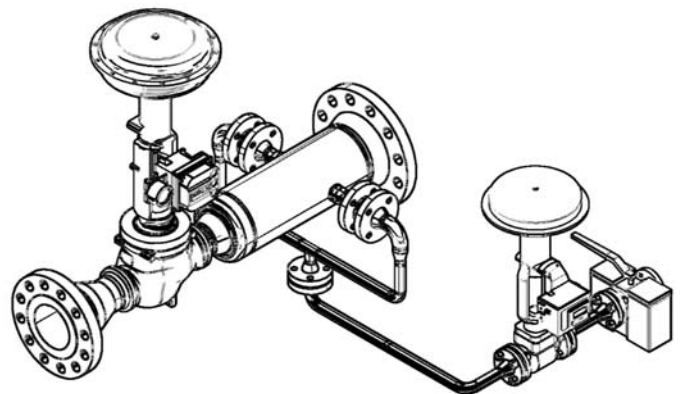
With efficient desuperheating the need for drainage and straight downstream piping is reduced. We use fixed geometry nozzles or spring loaded AntiFlashing nozzles. This in combination with optimizing the steam flow velocity minimizes the size of the water droplets. This keeps them suspended in the steam flow and makes the evaporation process as fast as possible.



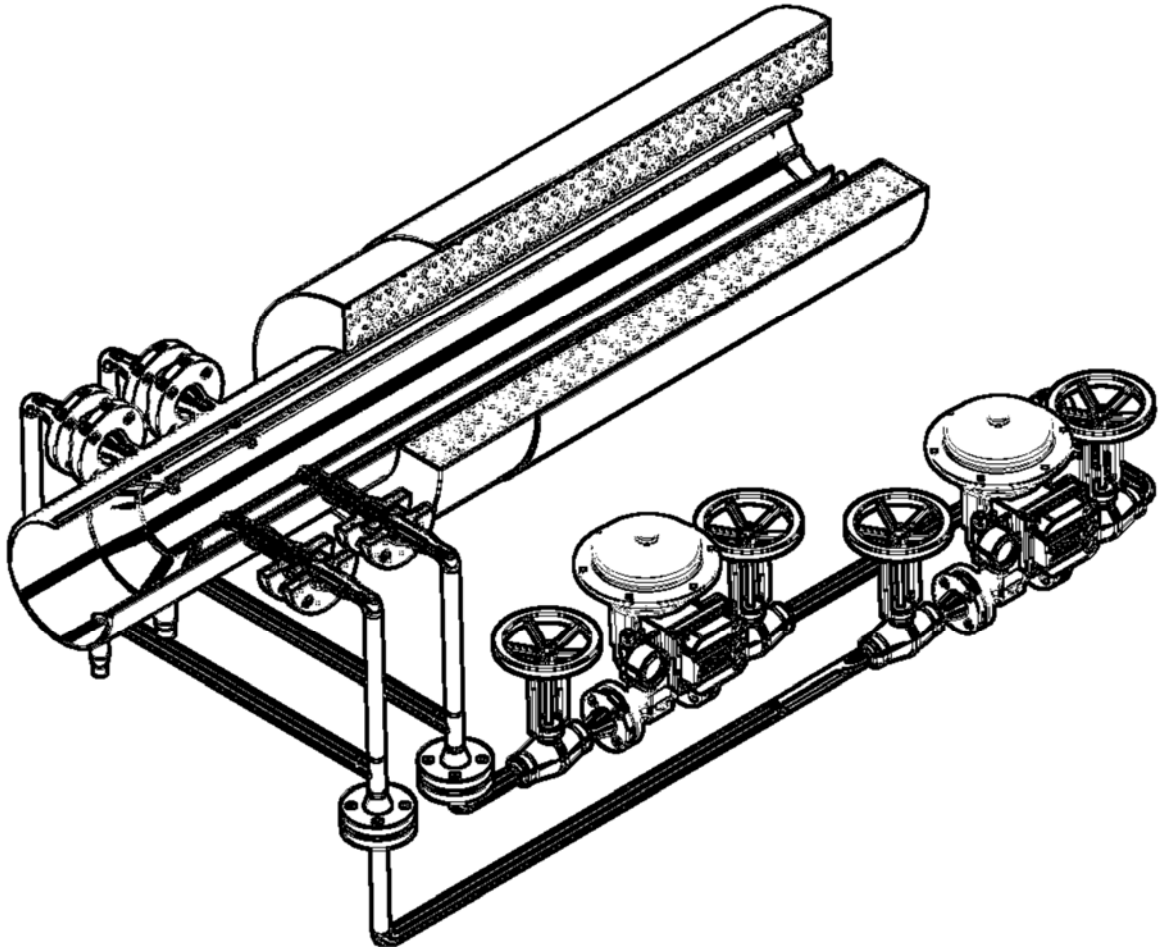
### Complete solutions

Askalon is not only a supplier of components. We can take care of the entire chain from calculation and construction to PED approval and installation. We also supply the necessary accessories such as strainers, temperature sensors and protective pockets and of course control and shut-off valves.

After installation, thanks to our service organization, we can offer cooperation regarding valve service and maintenance of valves.



On the next page you will find the details required to obtain a quote.



	Steam	Water
Design Pressure [bar g]		
Design Temperature [°C]		

Connections	DN	PN
Steam		
Water		

	Case 1	Case 2	Case 3
P Steam [bar(g)]			
T1 Steam [°C]			
T2 Steam [°C]			
Steam Flow [kg/s]			
P Water [bar(g)]			
T Water [°C]			

Tag no:	
<input type="checkbox"/>	Replacement of existing desuperheater
<input type="checkbox"/>	Isometrics available

### Contact us for engineered solutions

Gert Andrée  
+46 54-57 92 19

Gert.Andree@askalon.se

Per Nordquist  
+46 54-57 92 38

Per.Nordquist@askalon.se

Sören Kindlund  
+46 54-57 92 18

Soren.Kindlund@askalon.se